
PRIORITIZING STAKEHOLDER MAPPING AND ENGAGEMENT: ESSENTIAL FOR INSTITUTIONALIZING KT PLATFORMS

David Roger Walugembe (Ph.D. Candidate)

Health Information Science

Western University

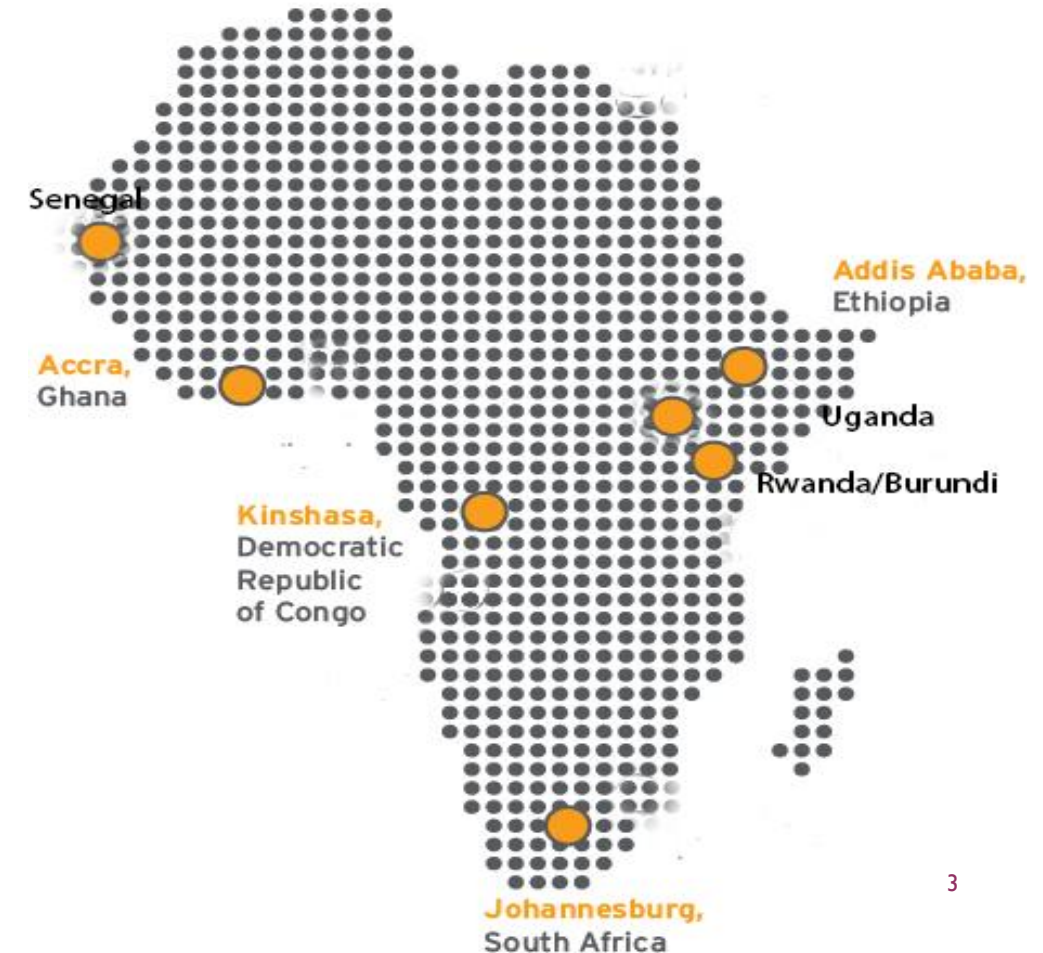
dwalugem@uwo.ca

PRESENTATION OUTLINE AND OBJECTIVES

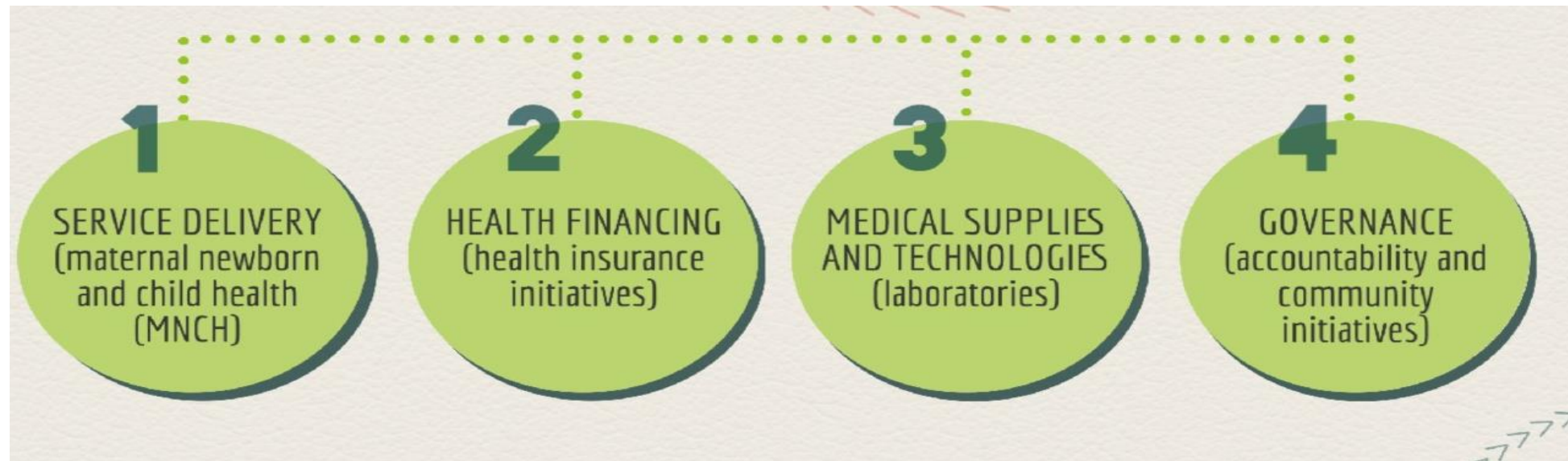
- To describe a lived experience of using KT strategies to establish and operationalize a KT platform
 - Stakeholder mapping
 - Stakeholder engagement
 - Integrated KT -work planning, KT products/outputs
 - Nurturing communities of practice-Reflexive learning
- To discuss how lessons learned can be seized as opportunities to institutionalize and sustain KT platforms
 - Project design and funding - addressing the sustainability question
 - Stakeholder engagement and managing expectations

BRIEF OVERVIEW OF THE KNOWLEDGE TRANSLATION NETWORK (KTNET) AFRICA PLATFORM

- One-million-euro grant
- Awarded to Makerere University School of Public Health
- By the Netherlands Organization for Scientific Research (NWO/WOTRO)
- To establish and coordinate a health systems related KT platform aimed at supporting researchers and research users to maximize the impact of the research evidence generated on health systems to inform policy and practice
- Operated across eight Sub-Saharan African countries.



BRIEF OVERVIEW- AREAS OF FOCUS



- Rwanda
- South Africa
- Ghana

- Ethiopia
- Ghana
- Rwanda

- Senegal

- Uganda
- Burundi & DR Congo

ESTABLISHING THE KTNET PLATFORM- THE PROCESS

- Signing memoranda of understanding
- Stakeholder mapping and analysis and KT capacity assessment
- KT capacity building (online and onsite)
- Joint development, implementation and monitoring of work plans
- Annual partners' meetings
- Provision of hands-on support in packaging of evidence products
- Fostering collaborations and linkages with external stakeholders
- Nurturing communities of practice-Reflexive learning



KT CAPACITY BUILDING AND JOINT WORK PLAN DEVELOPMENT



SUPPORTED PARTNERS TO DISSEMINATE RESEARCH FINDINGS



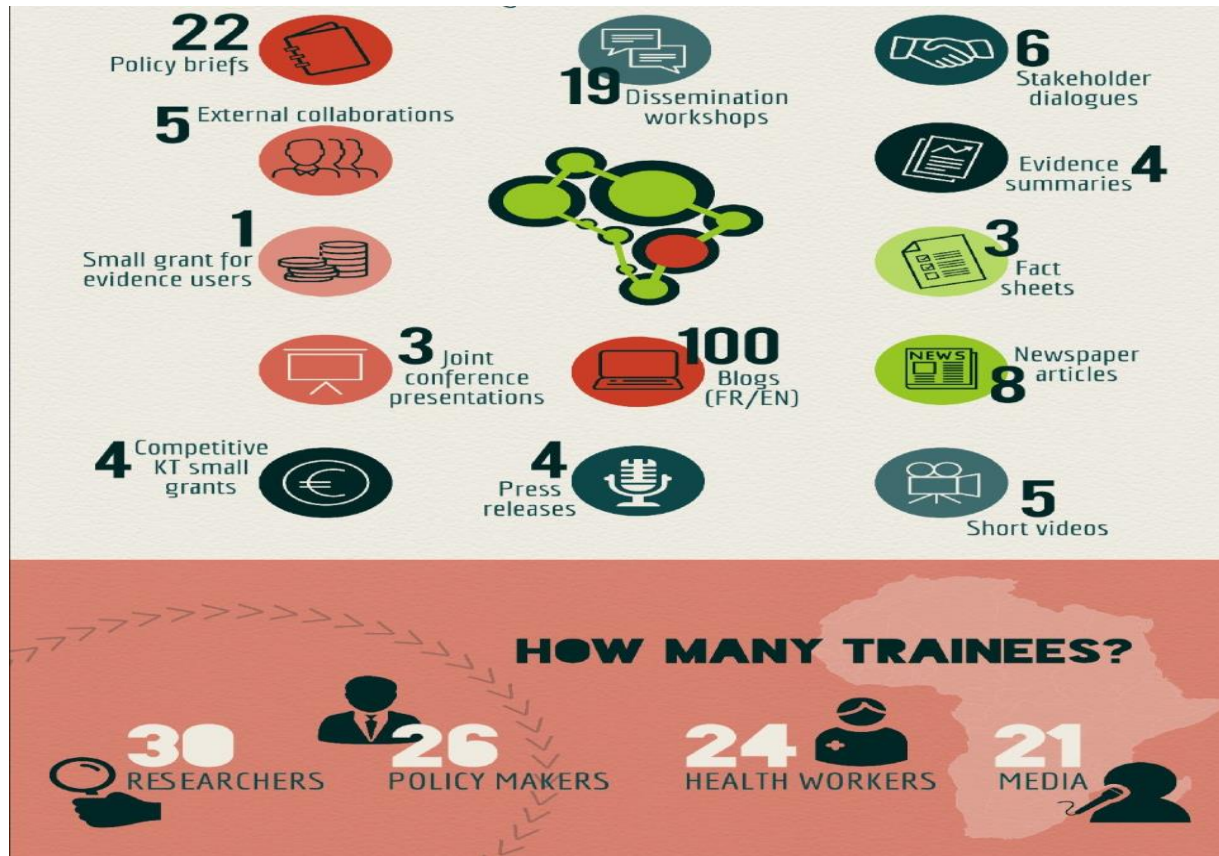
PROVIDED TECHNICAL SUPPORT DURING MID-TERM VISITS



ORGANIZED ANNUAL PARTNERS' MEETINGS & POLICY DIALOGUES



OUTPUTS AND OUTCOMES



- A functional KT platform
- Enhanced capacity to package research evidence in multiple formats
- Increased research dissemination to, and engagement of grassroot partners
- Emergence of communities of practice within the network
- Increased capacity and interest to engage in KT and research communication among stakeholders

SUMMARY OF LESSONS LEARNT

- Managing stakeholder expectations across political, social and economic contexts is challenging
- Appreciating variations in context and customizing KT approaches is essential for securing buy-in of stakeholders
- Early stakeholder engagement essential for establishing mutual respect and understanding within KT partnerships/platforms
- Adopting a flexible approach to the implementation of the KT work plans enables all stakeholders to seize impromptu opportunities that may contribute to uptake of evidence into policy and practice
- It is critical to embed institutionalization and sustainability of KT platforms at conceptualization and design phase.

INSTITUTIONALIZATION AND SUSTAINABILITY OF KT PLATFORMS : REFLECTIONS

Embedding stakeholder mapping and analysis at the conceptualization and design phases of KT platforms /interventions is critical for their institutionalization

- Who are the key stakeholders?
- What is their level of interest in the KT platform?
- How knowledgeable are they about the KT platform? (Capacity assessment)
- What contributions will they bring to the KT platform?
- How and when do they prefer to be engaged in the KT platform?
- How shall we jointly monitor and evaluate the activities, outputs, outcomes and impacts of the KT platform/intervention?

INSTITUTIONALIZATION AND SUSTAINABILITY OF KT PLATFORMS : REFLECTIONS

Beyond the initial funding for the platform

- What is the projected future of the KT platform?
- How do the funders, implementers and beneficiaries of the KT platform/ intervention intend to ensure continuity of the activities and benefits beyond the initial funding period?
- How will the funders, implementers and beneficiaries measure and evaluate the sustainability of the platform and its contribution/ effects?



THANK YOU FOR YOUR ATTENTION
&
LET THE QUESTIONS FLOW

RESOURCES

- Varvasovszky, Z., & Brugha, R. (2000). A stakeholder analysis. *Health policy and planning*, 15(3), 338-345.
- <http://ktnet africa.net/about-ktnet-africa>
- Canadian Health Services Research Foundation (2005). "Is research working for you." A self-assessment tool and discussion guide for health services and policy organizations. Ottawa: Canadian Health Services Research Foundation.
- <https://www.cfhi-fcass.ca/PublicationsAndResources/ResourcesAndTools/SelfAssessmentTool.aspx>
- Ekirapa-Kiracho, E., Walugembe, D. R., Tetui, M., Kisakye, A. N., Rutebemberwa, E., Sengooba, F., ... & Kiwanuka, S. N. (2014). Evaluation of a health systems knowledge translation network for Africa (KTNET): a study protocol. *Implementation Science*, 9(1), 170.
- Walugembe, D. R., Sibbald, S., Le Ber, M. J., & Kothari, A. (2019). Sustainability of public health interventions: where are the gaps?. *Health research policy and systems*, 17(1), 8.
- Kothari, A., & Wathen, C. N. (2013). A critical second look at integrated knowledge translation. *Health Policy*, 109(2), 187-191.